

**Safe and reliable**

**The system**

Quodfish Systems are time proven Electronic Chart Systems tailor-made for both fishing and navigation.

Numerous powerful and relevant user functions have been developed with the assistance of many fishermen. These functions combined with detailed charts and information from connected sensors, give fishermen the best possible display of their fishing grounds.

The Windows based Quodfish Systems are because of the software being continually updated to the latest market requirements and the favourable conditions of the software maintenance contract the best long term solution for the fishing industry.

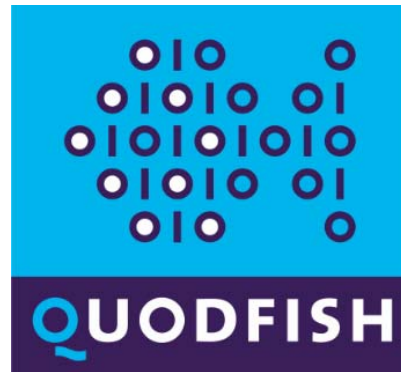
The, by Chartworx Holland, provided C-MAP Professional (CM93/3) and MAX Pro data give fishermen the option of displaying only the data deemed necessary at a given time. Own user information can be displayed on the screen and stored in separate files on the disk.

The system offers a real time conversion for data from some other systems while other data formats can be converted into Quodfish format in-house.

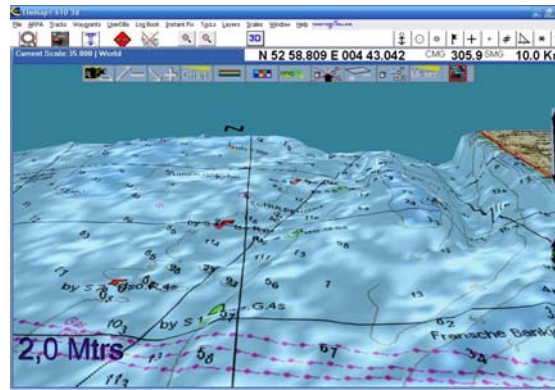
Quodfish offers a most sophisticated and state of the art three dimensional display of the seafloor. The 3D image is derived from the chart information supplemented by bathymetric data based on official surveys from Hydrographic Offices and echo sounder observations from users.

All Chartworx systems can be extended with an AIS module for a very competitive price.

Visit our website  
[www.chartworx.com](http://www.chartworx.com)



*Since 1982  
6500 systems sold*



Chartworx Holland B.V.  
Paleiskade 100, Postbus 380  
1780 AJ Den Helder  
Tel. 0223-684200, [info@chartworx.nl](mailto:info@chartworx.nl)

**Quodfish® Series**

**Quodfish Series and C-MAP digital data  
A powerful combination to support fishing operations.**

C-MAP Professional (CM93/3) and MAX Pro data are fully based on official charts and meets the requirements of the ISO standard 19379 which was published August 2003. Some countries, notably the USA and Italy have already accepted the digital charts meeting this ISO standard as paper equivalent.



Quodfish Systems are most user friendly and follow the standard Windows menu structure. The complete manual is part of the system as well and can be called up as a 'Word' document simply by clicking on the Chartworx Holland logo.

- Chartworx Holland software is world-wide in use on more than 6500 ships.
- Unlimited user information can be stored.
- Interfacing to most sensors
- World-wide dealer network and Internet support.
- Stored information can be shared and analysed.
- Fishing data can be saved from season to season
- User friendly, functional menus.

X works in this version, \* optional, + only with C-Map subscription contract

|  | QF 210 | QF 410 | QF 610 | QUOD Plot |
|--|--------|--------|--------|-----------|
| Windows XP (SP2)                       | X      | X      | X      | X         |
| C-Map CM93/3 / MAX Pro                 | X      | X      | X      | X         |
| Display vector and raster charts       | X      | X      | X      |           |
| Chart correction and update Service    | X      | X      | X      | X         |
| Way points                             | 255    | 255    | 255    | 255       |
| Display way point files simultaneously | 255    | 255    | 255    | 255       |
| Route planning                         | X      | X      | X      | X         |
| Track recording                        | X      | X      | X      | X         |
| Display track files at once            | 20     | 20     | 20     | 20        |
| Own line and symbol screen             | X      | X      | X      | X         |
| Quick route                            | X      | X      | X      | X         |
| Own user database                      | X      | X      | X      | X         |
| Display own user database              | 255    | 255    | 255    | 255       |
| Import / export UDB files              | X      | X      | X      | X         |
| Merge UDB files                        | X      | X      | X      | X         |
| Instant fix                            | X      | X      | X      | X         |
| Navigation receivers                   | 3      | 3      | 3      | 3         |
| ARPA incl. tracking                    |        |        | X      | X         |
| Autopilot                              |        | X      | X      | X         |
| Gyro                                   | X      | X      | X      | X         |
| Wind direction / force                 | X      | X      | X      | X         |
| Echo sounder                           | X      | X      | X      | X         |
| Log                                    | X      | X      | X      | X         |
| Auto scaling                           | X      | X      | X      | X         |
| Man overboard                          | X      | X      | X      | X         |
| SOG/COG                                | X      | X      | X      | X         |
| Data storage                           | Unl.   | Unl.   | Unl.   | Unl.      |
| Help function                          | X      | X      | X      | X         |
| Multi language                         | X      | X      | X      | X         |
| Pan, zoom and scroll                   | X      | X      | X      | X         |
| Day / dusk / night display             | X      | X      | X      | X         |
| Selectable colour palettes             | X      | X      | X      | X         |
| Vertical tide                          | X      | X      | X      | X         |
| Go to position                         | X      | X      | X      | X         |
| Speed and direction vector             | X      | X      | X      | X         |
| Follow ship option                     | X      | X      | X      | X         |
| Range / bearing to next way point      | X      | X      | X      | X         |
| Go to way point                        | X      | X      | X      | X         |
| Load way point in GPS                  |        |        |        |           |
| 3D                                     | *      | *      | *      | *         |
| 2D                                     | *      | *      | *      | X         |
| Alarm functions                        | X      | X      | X      | X         |
| AIS (Automatic Identification System)  | *      | *      | *      | X         |
| RTU (Real Time Updating)               | +      | +      | +      | +         |



### System requirements

Windows XP (SP2)  
 Processor Pentium 2 Ghz or faster  
 Mouse, trackball, or similar with scroll function  
 DVD ROM drive  
 Hard disk space 20 GB or more  
 Internal memory, minimal 512 Mb RAM  
 USB port  
 Serial port  
 RS232 cable to connect GPS to the computer  
 VGA card with screen resolution 1024x768 16bit.  
 Direct X version 9.0 or higher

### Installation

Insert the DVD in the DVD reader. From here the process runs automatically. Just click 'next' when asked for.

Chartworx Holland electronic chart systems are easy to use.

Ask for a demonstration cd and try!



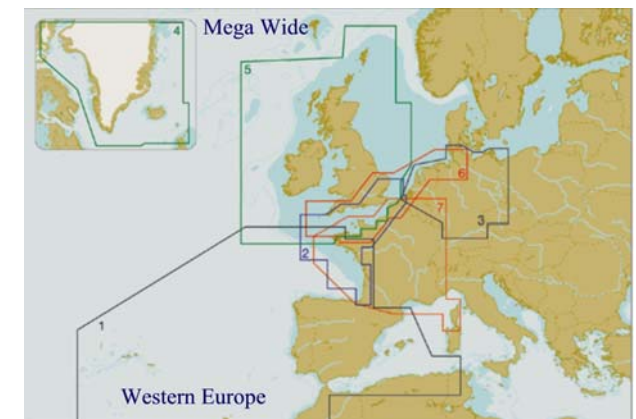
### Products

Professional Electronic Chart Systems  
 QUOD Plot, Quodfish@210, Quodfish@410, Quodfish@610 and Quodfish@Planner

Tidal modules  
 As optional layer on your chart for direct use.

Quodfish supports C-MAP Professional (CM93/3) and MAX Pro data detailed electronic navigational charts certified by Det Norske Veritas (DNV) to meet the requirement of ISO 19379. (specifications for accuracy, content and testing of commercial electronic chart databases)

CM-ENC (SENC format)



MAX Pro Area's Western Europe