

Safe and reliable

Chartworx has been involved in development, production and distribution of electronic chart systems for both the professional and light marine market since 1982.

Chartworx management consists of people with long standing seagoing, hydrographic and cartographic experience, supplemented by a team of skilled software developers and supporting staff.

Chartworx electronic chart systems operating under Microsoft Windows vary from systems developed for integrated bridges to systems to be used on board of yachts.

"Chartworx object is to enhance safety at sea"

The systems

can be supported by detailed digital chart information in vector or official raster scan format making Chartworx systems the most powerful and flexible tool to support safe navigation.

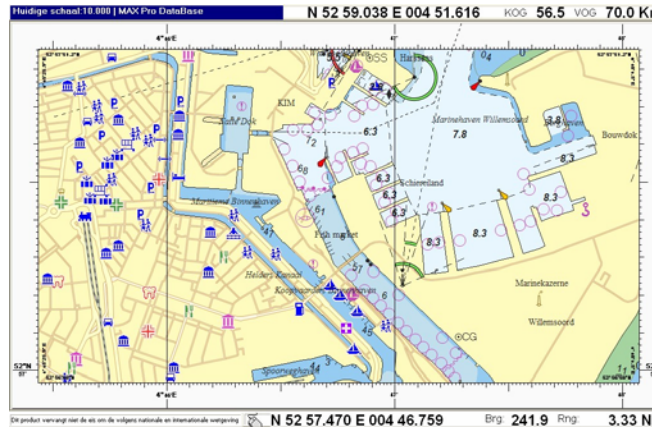
Interfacing of sensors (optional modules)

Chartworx systems offer the possibility to interface most equipment on board.

The information of a maximum of 3 navigation receivers, ARPA, Gyro, Autopilot, AIS, etc. can all be interfaced to the electronic chart.



**Visit our website
www.chartworx.com**



Chartworx Holland B.V.
Paleiskade 100, Postbus 380
1780 AJ Den Helder
Tel. 0223-684200, info@chartworx.nl

**TheMAP®/Trax® Series
PC navigation on board**

Professional electronic chart systems for:

- Merchant fleet
- Offshore
- Fishing fleet
- Government
- Inland navigation
- Leisure



Advantages :

On a paper chart you can see where you **have been**. On an electronic chart you can see where you **are**.

Every second your actual position. Knowing where you are, also during darkness, poor visibility or under severe weather conditions. Visiting a port for the first time at night is not a problem anymore.

Apart of TheMAP 10 and Trax electronic chart system for leisure boats supporting both C-Map data and official raster charts (ARCS, BSB), Chartworx also offers TheMAP Yachting for the yachtsman who is looking for just something more for still a very competitive price. This system also supports ARPA, Automatic Pilot etc.

● supported, * optional, + only with C-Map subscription contract, X standard for MAX Pro, otherwise option

	TM 10 V(R)	TM Yacht	Trax Sail	Trax Sail Pro
Windows XP (SP2) / Vista	●	●	●	●
MAX Pro	●	●	●	●
ARCS	Only VR	X		
BSB data	Only VR	X		
Display vector and raster charts	Only VR	X		
N / Course up	●	●	●	●
Chart correction and update service	●	●	●	●
Way Points (nr. of points)	15	60	15	60
Display way point files simultaneously	1	2	1	2
Route planning	●	●	●	●
Track recording	●	●	●	●
Display of track files	1	2	1	2
Own line and symbol screen	●	●	●	●
Quick route	●	●	●	●
Own user database (nr. of points)	25	50	25	50
Display own user database	1	2	1	2
Import / export UDB files	●	●	●	●
Merge UDB files	●	●	●	●
Instant fix	●	●	●	●
GPS	●	●	●	●
ARPA incl. tracking		●		●
Autopilot		●		●
Gyro		●		●
Wind direction / force	●	●	●	●
Echo sounder		●		●
Log		●		●
Auto scaling	●	●	X	X
Man overboard	●	●	●	●
SOG/COG	●	●	●	●
Data storage	Unl.	Unl.	Unl.	Unl.
Help function	●	●	●	●
Multi language	●	●	●	●
Pan, zoom and scroll	●	●	●	●
Day / dusk / night display	●	●	●	●
Selectable colour palettes	●	●	●	●
Vertical tide	●	●	●	●
Go to position	●	●	●	●
Speed and direction vector	●	●	●	●
Follow ship option	●	●	●	●
Range / bearing to next way point	●	●	●	●
Load way point in GPS		●		●
Horizontal tide	X	X	X	X
3D / 2D	*	*	*	*
AIS (Automatic Identification System)	*	*	*	*
RTU (Real Time Updating)	+	+	+	+

**Software easy to use and quickly
to install on all pc's and laptops**

System requirements

Windows XP (SP2) / Vista
 Processor Pentium 2 Ghz or faster
 Mouse, trackball, or similar with scroll function
 DVD ROM drive
 Hard disk space 20 GB or more
 Internal memory, minimal 512 Mb RAM
 USB port
 Serial port
 RS232 cable to connect GPS to the computer
 VGA card with screen resolution 1024x768,
 16bit
 Direct X version 9.0 (or higher)

Installation

Insert the CD in the CD reader. From here the process runs automatically. Just click 'next' when asked for.

*All Chartworx systems support **C-Map** data, the only one in the world certified in accordance with ISO 19379, **ARCS**, the official digital charts from the British Admiralty and **BSB** (raster charts produced by Maptech)*



Chartworx Holland electronic chart systems are easy to use.
 Ask for a demonstration cd and try!

Products

Professional Electronic Chart Systems

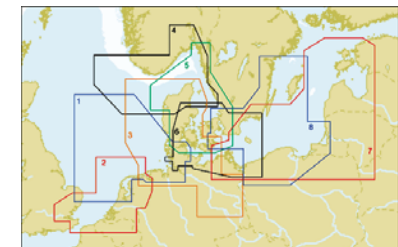
TheMAP®10, TheMAP®Yachting, Trax®Sail and Trax®Sail Pro.

Tidal modules

As optional layer on your chart (standard with MAX PRO)

Chartworx systems for the recreational market support C-Map Max Pro, data with additional information like horizontal and vertical tides, weather forecast, information about ports, marina's, etc.

Max Pro has been certified by Det Norske Veritas to ISO 19379, the international standard for commercial electronic navigational charts.



MAX Pro offers world wide coverage and is delivered in "Megawide" and "Wide" Area's.