

Safe and reliable

The system

TheMAP Systems are time proven Electronic Chart Systems.

Numerous powerful and relevant user functions have been developed with the assistance of many navigators. These functions combined with detailed charts and information from connected sensors, give users the best possible display of the surrounding area.

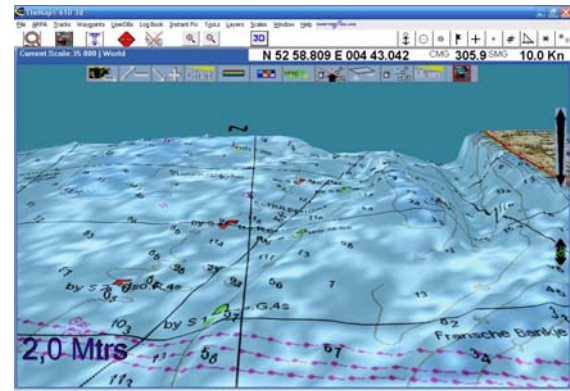
The Windows based Systems are because of the software being continually updated to the latest market requirements and the favourable conditions of the software maintenance contract the best long term solution to support safe navigation.

The, by Chartworx Holland, provided C-MAP Professional (CM93/3) and MAX Pro data give users the option of displaying only the data deemed necessary at a given time. Own user information can be displayed on the screen and stored in separate files on the disk.

TheMAP offers a most sophisticated and state of the art three dimensional display of the seafloor. The 3D image is derived from the chart information supplemented by bathymetric data based on official surveys from Hydrographic Offices and echo sounder observations from users.

All Chartworx systems can be extended with an AIS module for a very competitive price.

Visit our website
www.chartworx.com



Chartworx Holland B.V.
 Paleiskade 100, Postbus 380
 1780 AJ Den Helder
 Tel. 0223-684200, info@chartworx.nl

TheMAP® Series

TheMAP Series and C-MAP digital data
 A powerful combination to support safe navigation.

C-MAP Professional (CM93/3) and MAX Pro data are fully based on official charts and meets the requirements of the ISO standard 19379.



TheMAP Systems are most user friendly and follow the standard Windows menu structure. The complete manual is part of the system as well and can be called up as a 'Word' document simply by clicking on the Chartworx Holland logo.

- Chartworx Holland software is world-wide in use on more than 6500 ships.
- Unlimited user information can be stored.
- Interfacing to most sensors
- World-wide dealer network and Internet support.
- Stored information can be shared and analysed.
- User friendly, functional menus.

X works in this version, * optional, + only with C-Map subscription contract

	TM 210	TM 410	TM 610
Windows XP (SP2) / Vista	X	X	X
C-Map CM93/3 / MAX Pro	X	X	X
Display vector and raster charts	X	X	X
Chart correction and update Service	X	X	X
Way points	255	255	255
Display way point files simultaneously	255	255	255
Route planning	X	X	X
Track recording	X	X	X
Display track files at once	20	20	20
Own line and symbol screen	X	X	X
Quick route	X	X	X
Own user database	X	X	X
Display own user database	255	255	255
Import / export UDB files	X	X	X
Merge UDB files	X	X	X
Instant fix	X	X	X
Navigation receivers	3	3	3
ARPA incl. tracking			X
Autopilot		X	X
Gyro	X	X	X
Wind direction / force	X	X	X
Echo sounder	X	X	X
Log	X	X	X
Auto scaling	X	X	X
Man overboard	X	X	X
SOG/COG	X	X	X
Data storage	Unl.	Unl.	Unl.
Help function	X	X	X
Multi language	X	X	X
Pan, zoom and scroll	X	X	X
Day / dusk / night display	X	X	X
Selectable colour palettes	X	X	X
Vertical tide	X	X	X
Go to position	X	X	X
Speed and direction vector	X	X	X
Follow ship option	X	X	X
Range / bearing to next way point	X	X	X
Go to way point	X	X	X
Load way point in GPS			
3D	*	*	*
2D	*	*	*
Alarm functions	X	X	X
AIS (Automatic Identification System)	*	*	*
RTU (Real Time Updating)	+	+	+



System requirements

Windows XP (SP2) / Vista
 Processor Pentium 2 Ghz or faster
 Mouse, trackball, or similar with scroll function
 DVD ROM drive
 Hard disk space 20 GB or more
 Internal memory, minimal 512 Mb RAM
 USB port
 Serial port
 RS232 cable to connect GPS to the computer
 VGA card with screen resolution 1024x768 16bit.
 Direct X version 9.0 or higher

Installation

Insert the DVD in the DVD reader. From here the process runs automatically. Just click 'next' when asked for.

Chartworx Holland electronic chart systems are easy to use.

Ask for a demonstration cd and try!



Products

Professional Electronic Chart Systems
 TheMAP®210, TheMAP®410, TheMAP®610 and TheMAP®Planner

Tidal modules
 As optional layer on your chart for direct use.

TheMAP supports C-MAP Professional (CM93/3) and MAX Pro data detailed electronic navigational charts certified by Det Norske Veritas (DNV) to meet the requirement of ISO 19379. (specifications for accuracy, content and testing of commercial electronic chart databases)

Admiralty Raster Charts (ARCS)



CWC-22 (C-Map Professional CM93/3)